



### Shakespeare on the Saskatchewan Festival Park Rental Opportunities

Shakespeare on the Saskatchewan's (SOTS) goal is to open our new space to a wide variety of groups. On the Boards Staging Company (OBS) is working with SOTS as the rental manager. The SOTS redeveloped site is available for rental and includes amenities such as, a permanent open-air Amphitheatre, walk up concession, box office, dressing rooms, riverside deck, and park space. We are excited to open our gates and provide rental opportunities for a variety of Saskatchewan events- arts-based events, sport, culture, recreation programming, community organizations or individuals wishing to host a special event.

#### **FREE use of the site**

Currently anyone can use the outdoor site as they would a city park for informal and irregular gatherings. Users who wish to have exclusive access to the site and/or are planning events on the site must rent the site.

#### **Private Rental Opportunities**

- Through **rental** of our facilities interested parties will have the opportunity to present their work to the public or host their own private events
- Rentals are available for half, single or multiple days
- Please note that rentals between mid-May and August, although possible, are limited due to the SOTS regular seasonal operations. Please contact SOTS DIRECTLY for information about rentals in this time period.
- Renters interested in utilizing the amphitheatre with the tent skin on will only be able to do so during the shoulder seasons of the regular SOTS summer festival. Annual dates shift depending on the needs of the festival and rental interest. General dates are in the May 1<sup>st</sup>-20<sup>th</sup> & September 1<sup>st</sup>-30<sup>th</sup> range. (DATES SUBJECT TO CHANGE)
- SOTS/OTB reserve the right to accept or decline any inquiries at its sole discretion

#### **Basic rental of the Festival Park from October to early May**

Rates start at \$375 for a half day to \$750 for a full day (plus staff time).

Basic rental includes access to all outdoor areas. See the following pages for more information.

**Open-Air Amphitheatre**

- ✓ Concrete amphitheatre
- ✓ Flexible seating arrangements
- ✓ Seats 225-325 people depending on seating
- ✓ Power



**Festival Flex Space**

- ✓ Crusher dust surface with a wide range of usage options.
- ✓ Fits approximately 200 people
- ✓ Access to power



**Open-Air Contemplation Circle**

- ✓ A quiet place to gather and reflect
- ✓ fits small gatherings of groups of 10 or less.
- ✓ *Scheduled to be completed in late fall 2020*



**Bob Steane Courtyard**

- ✓ European style stone courtyard
- ✓ Fits 150 – 225 people standing

**Riverside Deck**

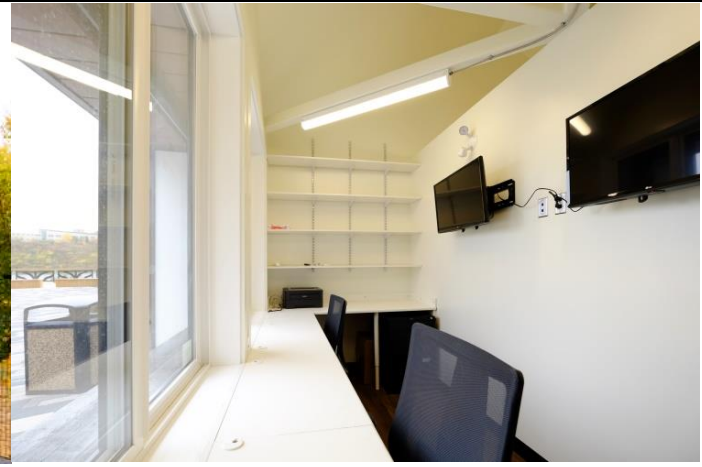
- ✓ Wood deck built on the edge of the river
- ✓ Ideal for small gatherings of about 25 or for performance stage for courtyard
- ✓ 3 of the benches are movable



**Rental add-ons:** Please contact On the Boards Staging Company for more information about rates and availability of technical gear, and use of pavilions including:

**Box Office Pavilion**

- ✓ 2 Service windows
- ✓ Electric heat
- ✓ Power



**Sir Toby's Tavern Pavilion**

- ✓ 2 service windows
  - ✓ Electric heat
  - ✓ Power
  - ✓ Display coolers
  - ✓ Chest freezer
  - ✓ Cash boxes
  - ✓ Water
  - ✓ Triple sink
  - ✓ Mop sink
- \*\*\* If water is required between Thanksgiving & May please contact for more information*



**Rental Add On Continued:**

**Dressing Room**

- ✓ 2 Dressing rooms (seats up to 8 each) each with water closet, sink, mirrors and chairs
- ✓ Electric and Forced air heat
- ✓ Power
- ✓ Water
- ✓ Accessible bathroom with shower
- ✓ Kitchenette with fridge, microwave & sink
- ✓ Laundry
- ✓ Work Station
- ✓ Utility sink

*\*\*\* If water is required between September & May please contact for more information*



**Amphitheatre with Norseman Tent Fabric**

More details to be provided.

Available in late May & immediately following the end of the regular SOTS season. These dates change each season and renters are encouraged to reach out for more information as soon as possible. Bookings must be made a minimum of 3 months in advance. Please contact On the Boards Staging Company for more information.

**Staff Time**

Staff time will be charged at an hourly rate. Please contact for more information

**Overnight Security**

This cost is mandatory when renting Amphitheatre with Norseman Tent fabric OR leaving items unlocked overnight. This will be a direct cost from security firm.

**Water After Buildings Winterized**

All buildings are winterized starting late September until the May long weekend. If water is required, please contact us for more information. Additional charges will apply.

**Weddings**

Special packages and pricing apply to all wedding rentals. All weddings must engage an approved event planner. Please contact for more information.

## **Booking information**

For more information, rental options, and pricing breakdowns, please contact us!

Shakespeare on the Saskatchewan engages a rental management company to handle all bookings that take place outside of the Shakespeare festival season. Please direct your inquiry to the appropriate person depending on the time of year in question:

### **Booking Contact Information**

#### **September to May:**

Cynthia Dyck

On the Boards Staging Company

[cynthia@ontheboards.ca](mailto:cynthia@ontheboards.ca)

office 306-249-1975

#### **June to August:**

Melanie Rogowski

Operations Manager

Shakespeare on the Saskatchewan

[om@shakespearesask.com](mailto:om@shakespearesask.com)

306-653-2300